

**RICHLAND TOWNSHIP
KALAMAZOO COUNTY, MICHIGAN**

RESOLUTION RE: SANITARY SEWER CHARGES

WHEREAS, the Township of Richland has previously adopted the Sewage Disposal System Ordinance, being Ordinance No. 232 (hereinafter "Ordinance") pertaining to the public sewer mains and public sewer service within the Township under the jurisdiction of the Gull Lake Sewer and Water Authority (hereinafter "Authority") acting as agent for the Township; and

WHEREAS, pursuant to Section 6 and other relevant sections of the Ordinance, it is the responsibility of the Township Board to determine certain appropriate fees/charges/rates relating to connection to and use of the public sanitary sewer system (hereinafter "Sanitary Sewer System"); and

WHEREAS, it is the desire of the Township Board to treat all customers similarly benefited and similarly situated equally to ensure the equitable allocation of the cost of the Management, Construction, Operation, Maintenance and Replacement of the Sanitary Sewer System as a whole, and to ensure that costs are levied in relevant proportion to the services being provided or able to be provided; and

WHEREAS, the Authority has recommended the following rates and charges be established.

NOW, THEREFORE, BE IT RESOLVED AS FOLLOWS:

A. All persons wishing to make a Service Connection to the Sanitary Sewer System shall make application upon forms provided by the Authority and pay the charges provided for in this Resolution. For all Service Connections other than for single family residence service, the application may be required by the Authority to include a plot plan showing all underground utility structures, existing and proposed.

B. That the following Charges, payable to the Gull Lake Sewer and Water Authority, are hereby effective October 1, 2012 or as otherwise specifically noticed hereunder:

1. Direct Connection Fees: See portion of attached RATE SCHEDULE A pertaining to Richland Township.

Application of charges under Schedule A:

- a. Front footage shall be measured along highway, right-of-way, easement or other measurement as determined by the Authority.

- b. Those parcels located in a Special Assessment District and subject to a full special assessment shall be credited for a Direct Connection Fee for each Residential Equivalent Unit assessed.
- c. No refunds shall be due any customer as a result of the calculations hereunder.
- d. These costs do not include the property owner's cost to make the on-site connection from the home, business or structure to the available public sewer in the street or right-of-way.
- e. The Authority may elect to allow a customer to enter into an Installment Contract for Direct Connection Fees per the Ordinance subject to such terms as shall be established by resolution of the Authority Board. The Authority Board may, based upon cost of funds and financing arrangements/commitments, determine that certain districts may not utilize the Installment Plan for any given period of time.

2.	Indirect Connection Fee:	\$1,625.00 per REU
3.	Sewer Use Fee:	<p>\$70.00 per quarter per REU for all Sewer use, effective October 1, 2012</p> <p>\$74.00 per quarter per REU for all Sewer use, effective October 1, 2013</p> <p>\$78.00 per quarter per REU for all Sewer use, effective October 1, 2014.</p>
4.	Debt Retirement Fee	None at this time.
5.	Permit Fee/Inspection and Administrative Fee	As determined from time-to-time by the Authority Board (does not include the State permit fee where applicable)
6.	Bond for Local Contractors:	As determined from time-to-time by the Authority Board as may be necessary to protect the public infrastructure.
7.	Turn-on, Turn-off of Service	As determined from time-to-time by the Authority Board
8.	Re-Establishment of Service	As determined from time-to-time by the Authority Board

- | | | |
|-----|--|---|
| 9. | Industrial Surcharges | As per the City of Kalamazoo ordinances |
| 10. | Special Rates | As delineated below:

MDEQ per contract, allow for ground-water/purge water discharge at City of Kalamazoo rate per cubic meter multiplied times 2. |
| 11. | Special Arrangements for Treatment costs at City of Kalamazoo

Richland Township | As delineated below:

Pfizer Animal Farms discharge into sanitary per MDEQ Farm Management Practices may include run-off from site |
| 12. | Surveillance fee | As determined from time-to-time by the Authority Board |

C. The Authority, as agent for the Township, has established an Operation and Maintenance Fund, Contract Payment Fund, Replacement Fund and Capital Improvement Fund (or funds with similar purpose with similar names) into which the various charges provided by this Resolution may be deposited and from which disbursements may be made for Management, Construction, Maintenance, Repair, Replacement and Operation of the System.

D. Use Charges shall be billed to each customer connected to the System by the Authority based upon the number of residential equivalent units as set forth within the Ordinance and as administered by the Authority.

All resolutions or parts of resolutions in conflict with the provisions hereof are hereby rescinded.

Attch: Schedule.

Motion was made by Bussema, seconded by Light, to adopt the foregoing Resolution.

Upon roll call vote, the following members voted "Aye":

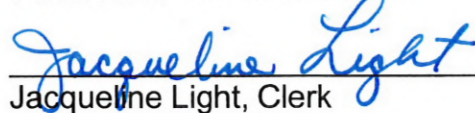
The following members voted "Nay":

The Supervisor declared the motion carried and the Resolution duly adopted.

CERTIFICATE

I hereby certify that the foregoing Resolution was accepted at a regular meeting of the Township of Richland held at 7401 N. 32nd St., Richland, Michigan, on August 21, 2012; that the meeting was conducted and public notice of the meeting was given pursuant to and in full compliance with the Open Meetings Act of Michigan; that a quorum of the Board was present and voted in favor of the Resolution; and that the minutes of the meeting were kept and will be or have been made available as required by the Open Meetings Act.

TOWNSHIP OF RICHLAND



Jacqueline Light, Clerk
7401 N. 32nd Street
Richland, MI 49083
269-629-5993

SCHEDULE A: DIRECT CONNECTION FEES PER DISTRICT

<u>District Name</u>	<u>Location</u>	<u>Map/Color Reference (*)</u>	<u>Cost per foot</u>	<u>Cost per 1st Unit</u>	<u>Cost per Unit Thereafter</u>
<u>Ross Township</u>					
Initial Gull Lake Sewer District	Gull Lake	Ross / Red	\$13	\$3250	\$3250
West M-89 #1 Sewer District	W. of 37 th St	Ross / Gold	\$13	\$3250	\$3250
Initial 37 th Street Pressure District	37 th Street	Ross / Purple	\$13	\$3250	\$3250
42 nd Street Interceptor	42 nd Street	Ross / Red	\$13	\$3250	\$3250
Gull Island Sewer District	Gull Lake	Ross / Green	\$0	\$15350	\$3250
Sherman Lake Pressure District (1)	Sherman Lake	Ross / Yellow	\$0	\$8696	\$3250
<u>Barry Township</u>					
Initial Gull Lake Sewer District	Gull Lake	Barry / Red	\$13	\$3250	\$3250
<u>Prairieville Township</u>					
Initial Gull Lake Sewer District	Gull Lake	Prairieville/Red	\$13	\$3250	\$3250
Little Long Lake Sewer District	L. Long Lake	Prairieville/Blue	\$0	\$8600	\$3250
<u>Richland Township</u>					
Initial Gull Lake Sewer District	Gull Lake	Richland /Red	\$13	\$3250	\$3250
West M-89 #1 Sewer District	W. of 37 th St	Richland /Gold	\$13	\$3250	\$3250
West M-89 #2 Sewer District	E/N of Village	Richland /Gold	\$13	\$3250	\$3250
Foxwood/Englewood Sewer Dist	W of Village	Richland /Green	\$13	\$6000	\$3250
Gull Road Sewer District	Along Gull Rd	Richland /Green	\$13	\$6000	\$3250
<u>Village of Richland</u>					
West M-89 #2 Sewer District	Gull/DE/Yktown	Richland/Gold	\$13	\$3250	\$3250
32 nd Street Sewer District	32 nd Street	Richland/Green	\$13	\$6000	\$3250
Bunkerhill Sewer District	Bunkerhill	Richland/Green	\$13	\$6000	\$3250
<u>Charleston Township</u>					
Initial Gull Lake Sewer District	37 th South	Charleston/Red	\$13	\$3250	\$3250
Initial 37 th Street Pressure District	37 th Street	Charleston//Purple	\$13	\$3250	\$3250

*Maps on file at Gull Lake Sewer and Water Authority offices at 11829 E. M-89, Richland, MI 49083 and at www.glswwa.org, under "Ordinances + Rates" (to be posted after the August 1, 2008 effective date)

(1) Sherman Lake Connection Fee -- increases March 1st annually by the following schedule:

2008	\$8696	2015	\$10068
2009	\$8892	2016	\$10264
2010	\$9088	2017	\$10460
2011	\$9284	2018	\$10656
2012	\$9480	2019	\$10852
2013	\$9676	2020	\$11048
2014	\$9872	2021	\$11244

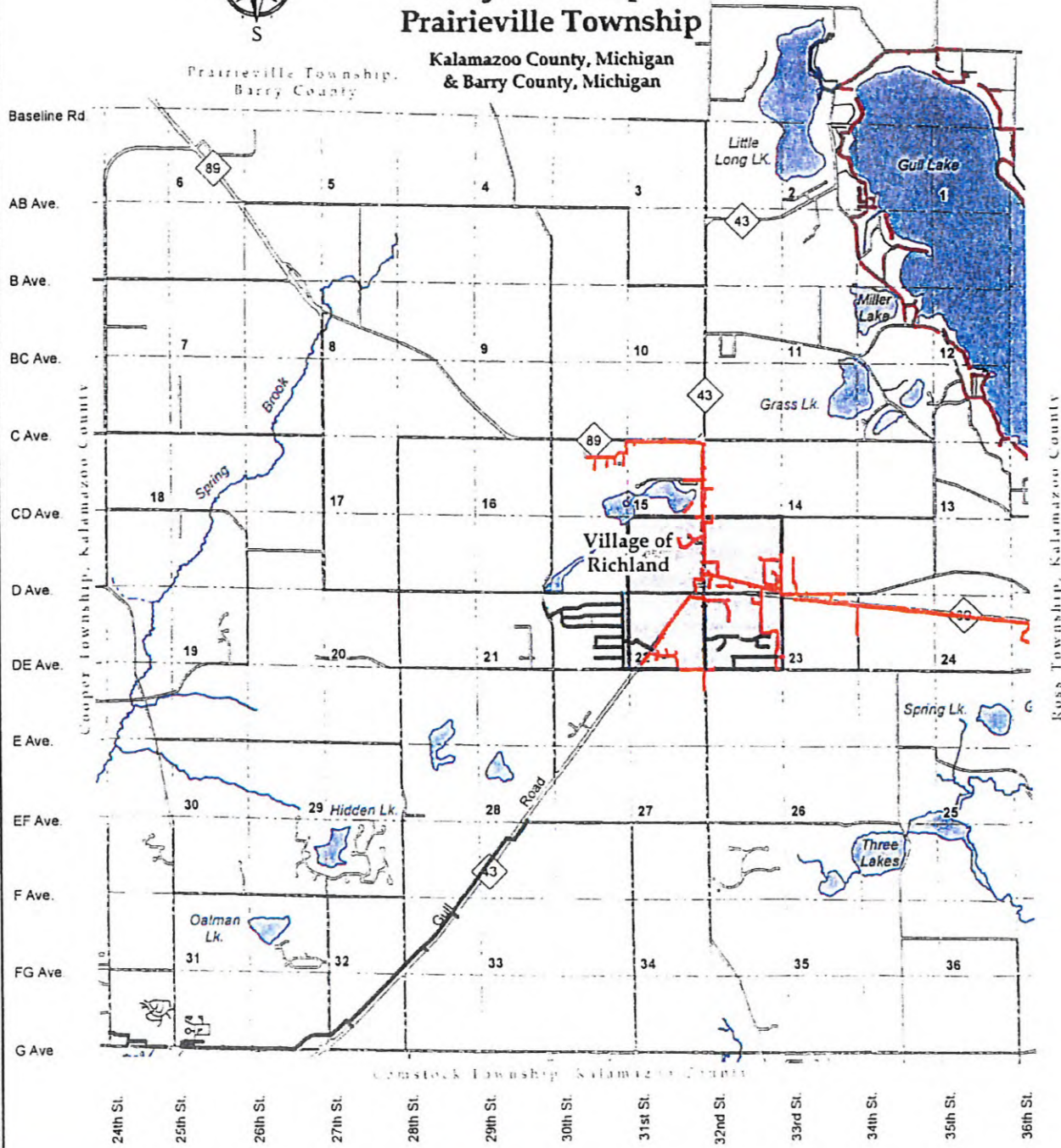
GLS&WA DIRECT CONNECTION FEE DISTRICT MAP

-within-

Richland Village/Township, Barry Township & Prairieville Township

Kalamazoo County, Michigan
& Barry County, Michigan

0 2,500 5,000
Scale: 1" = 5000'



	\$0/Foot, 8,600/First Unit + \$3,250/Unit thereafter		\$13/Foot, \$3,250/First Unit + \$3,250/Unit thereafter
	\$13/Foot, \$6,000/First Unit + \$3,250/Unit thereafter		\$13/Foot, \$3,250/First Unit + \$3,250/Unit thereafter

Printed: May 2008
Prein&Newhof
Engineers, Surveyors, and Environmental Scientists

J:\2008_Cover\94412000_Cover\Grid 11-Base_Archie\00000000_Cover\RichlandVillage\RichlandVillageFeeMap.mxd