

LOWER LEVEL FLOOR PLAN

NEW BUILDING FOR:
GULL LAKE SEWER AND WATER AUTHORITY
 7722 N. 37TH STREET
 RICHLAND, MICHIGAN 49083

HOWARD L. OVERBERG
 ARCHITECT, P.C.

198 EAST CENTRE
 PORTAGE, MICHIGAN

PHONE (269) 323-2422
 FAX (269) 323-2440

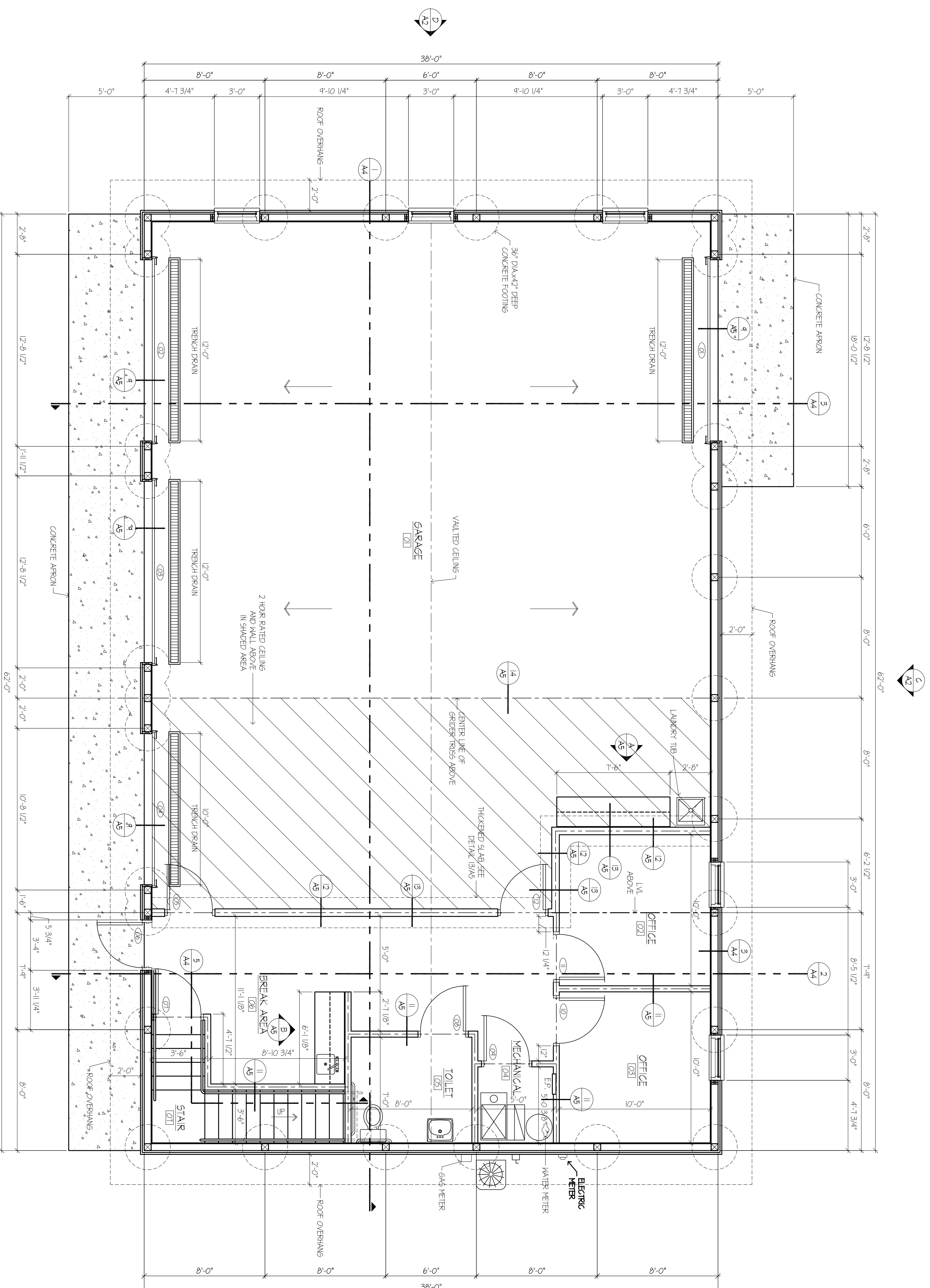
HL

PROJECT NO.
 0000

DATE
 01/03/17

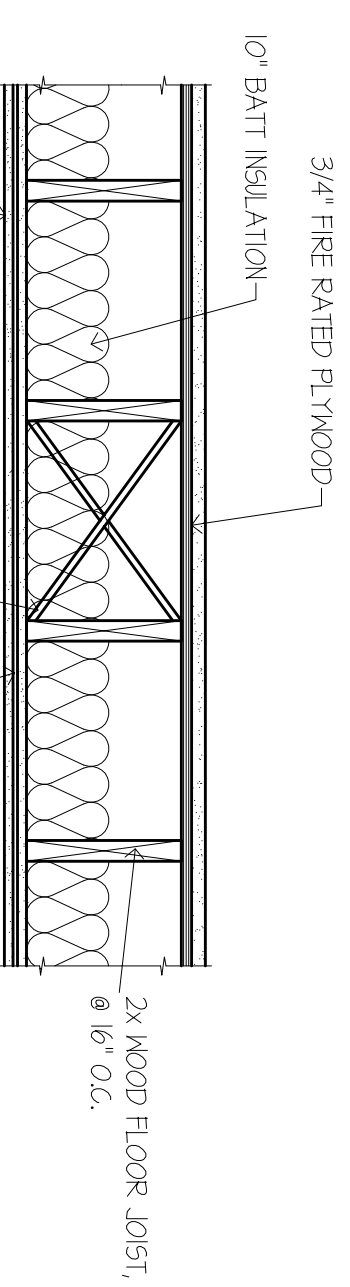
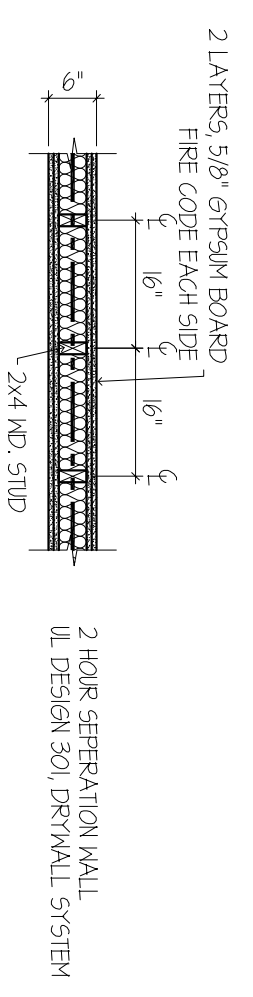
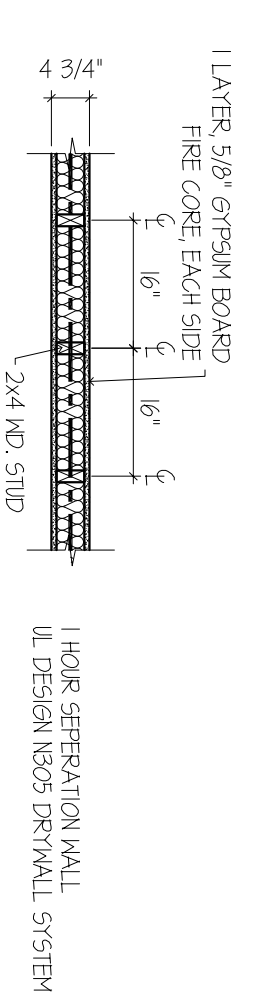
REVISION

SHEET
A1



FIRST FLOOR PLAN
 SCALE: 1/4" = 1'-0"

WALL TYPES:



5/8" Gypsum Firecode Type "X"
2 HOUR FLOOR ASSEMBLY @ SECOND FLOOR
 2 HOUR RESISTION FLOOR SYSTEM