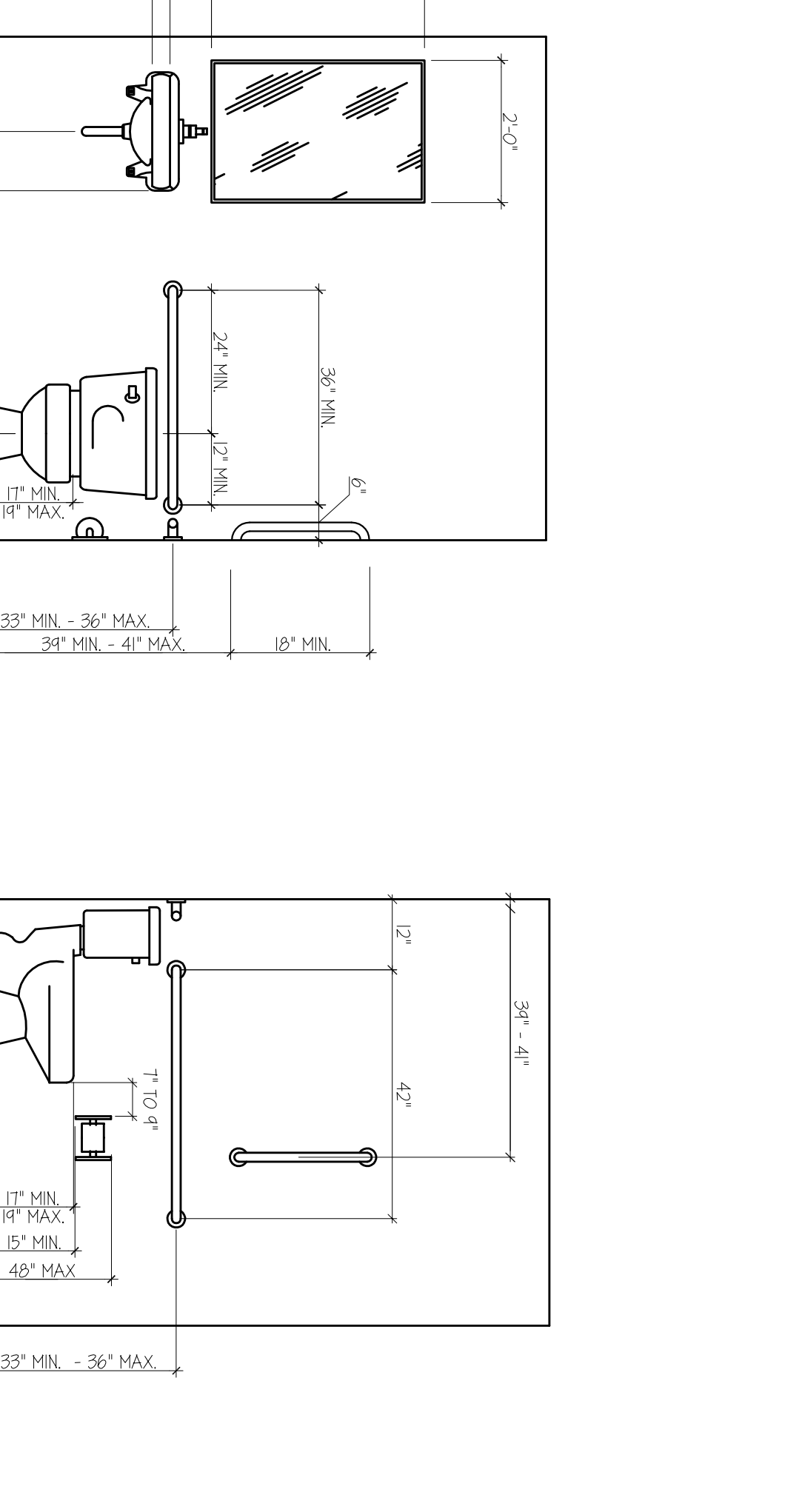
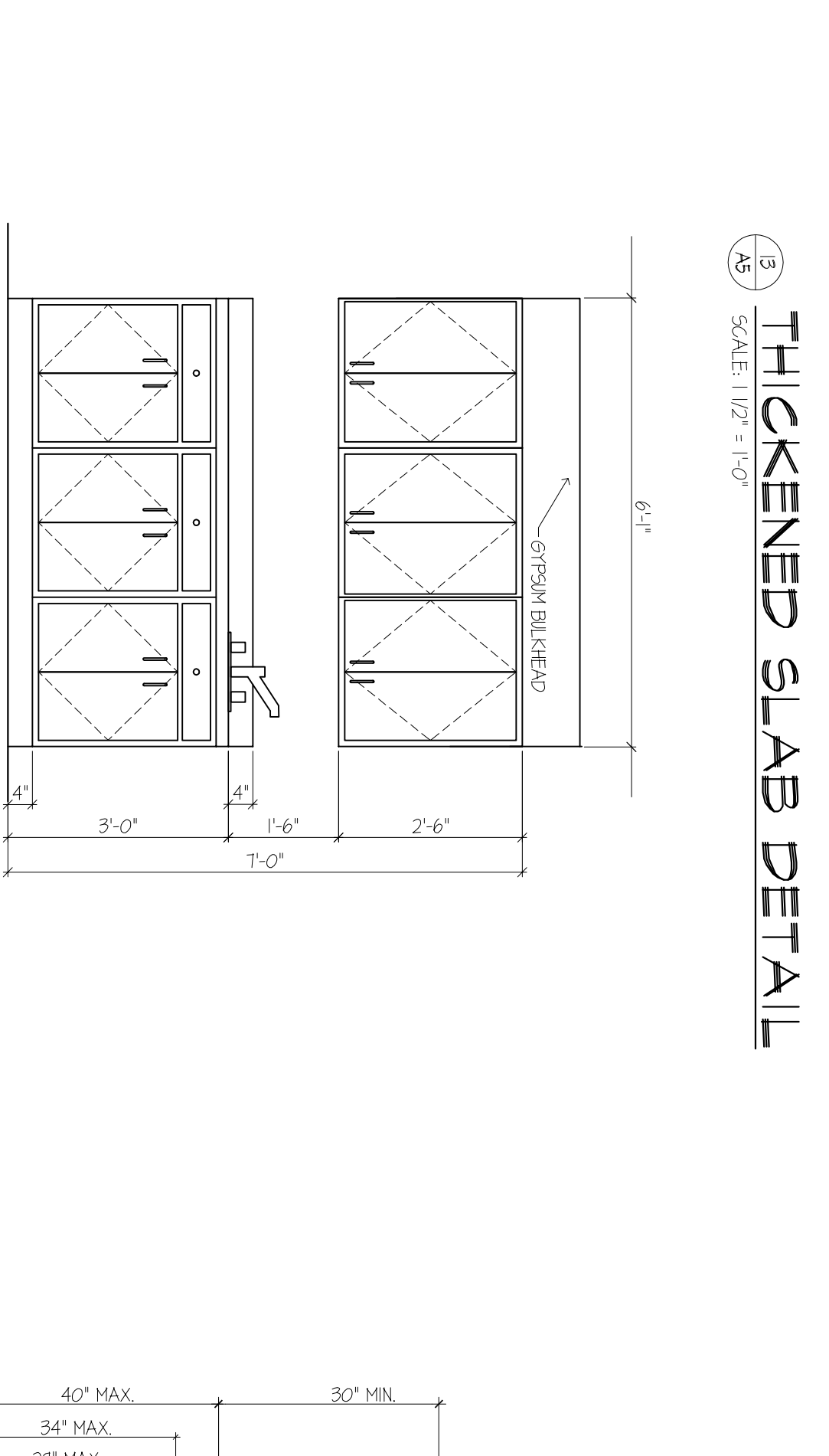
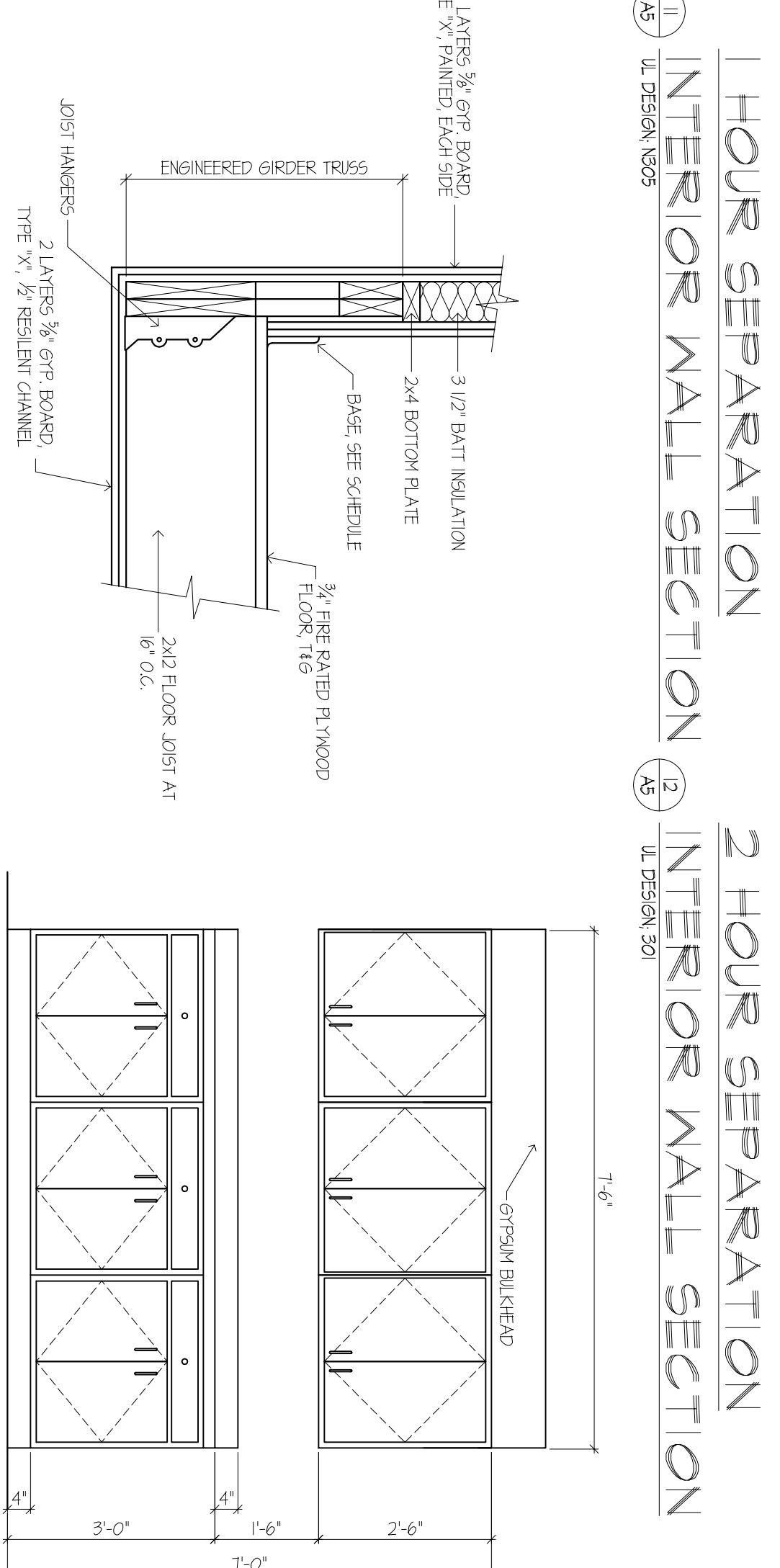
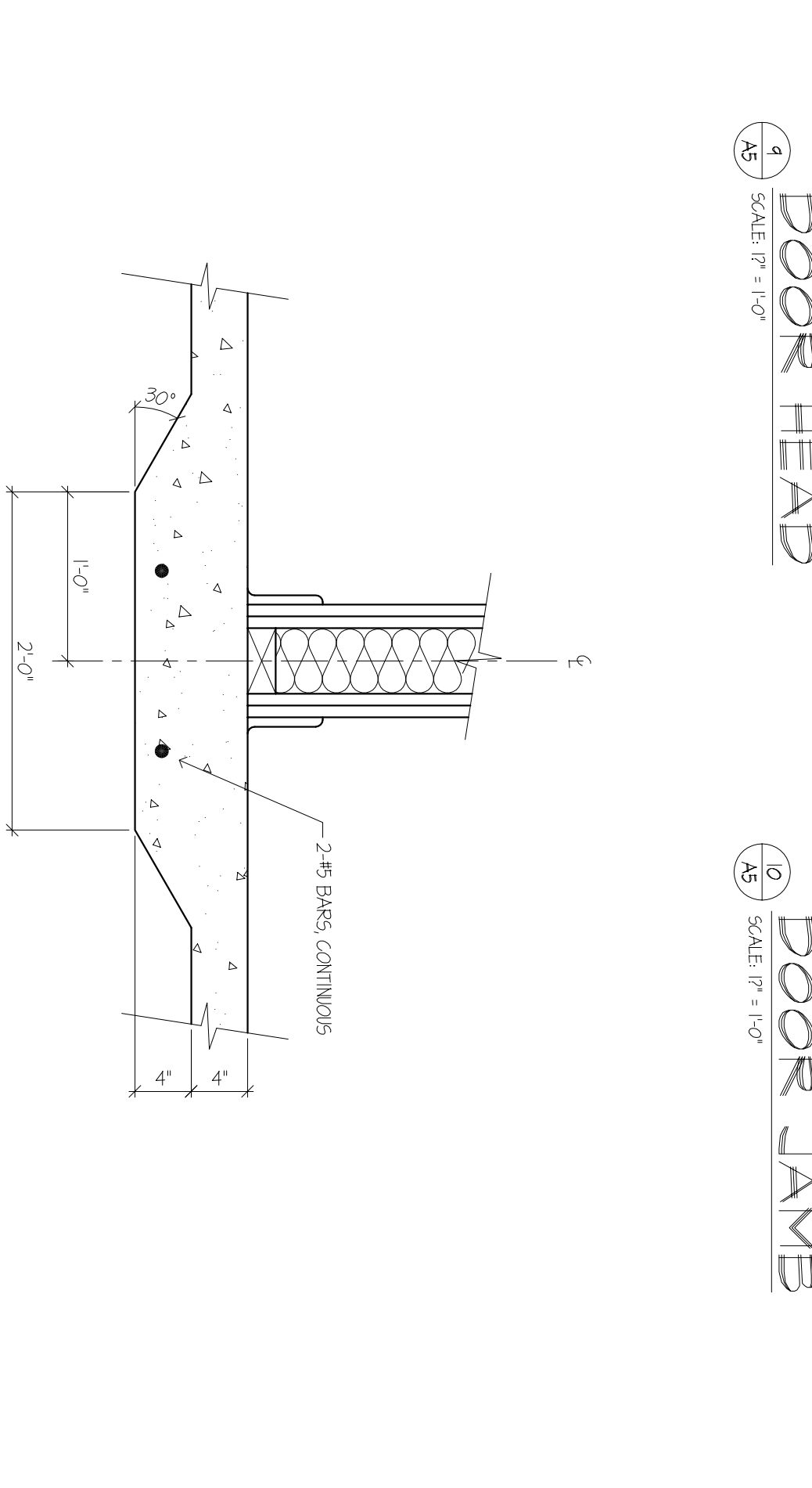
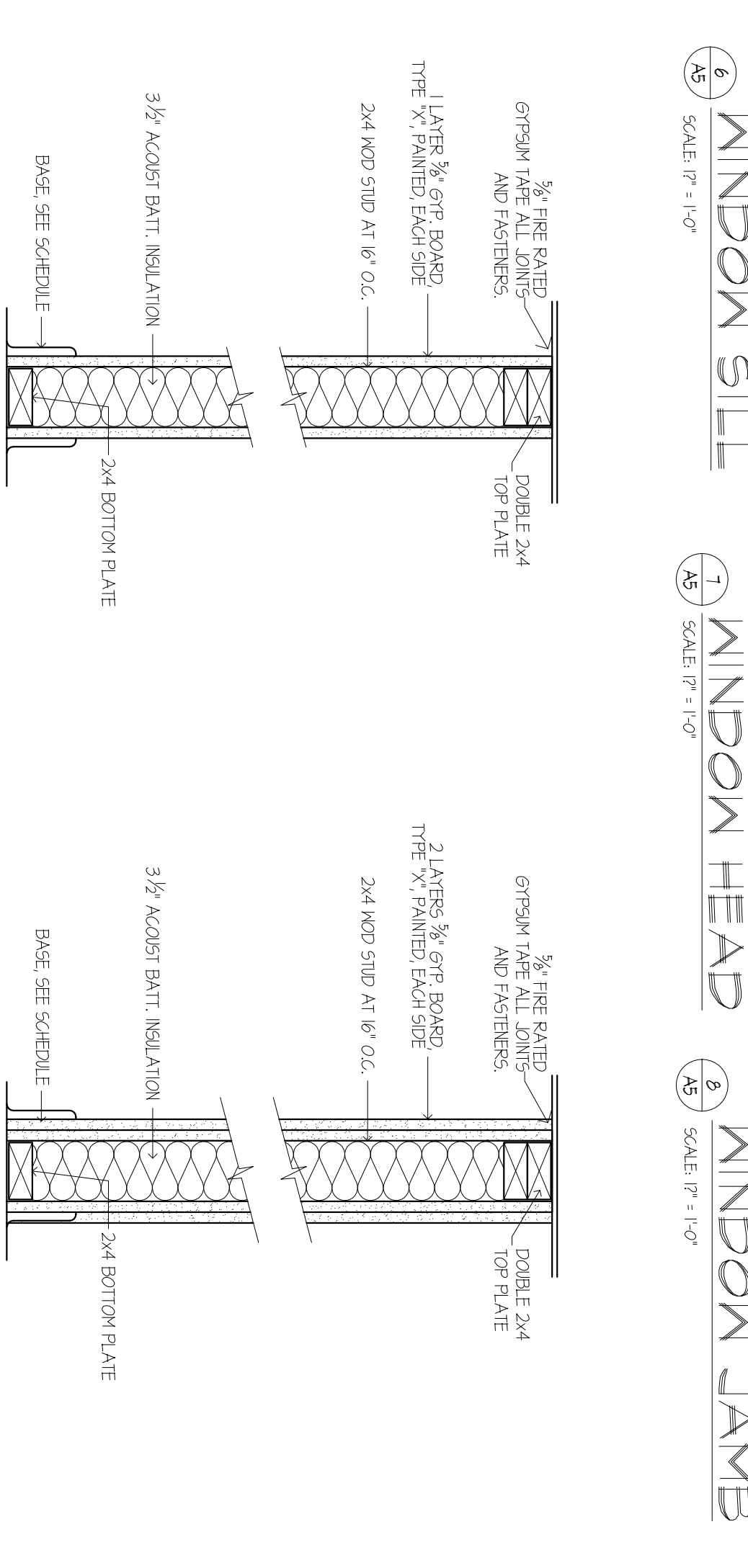
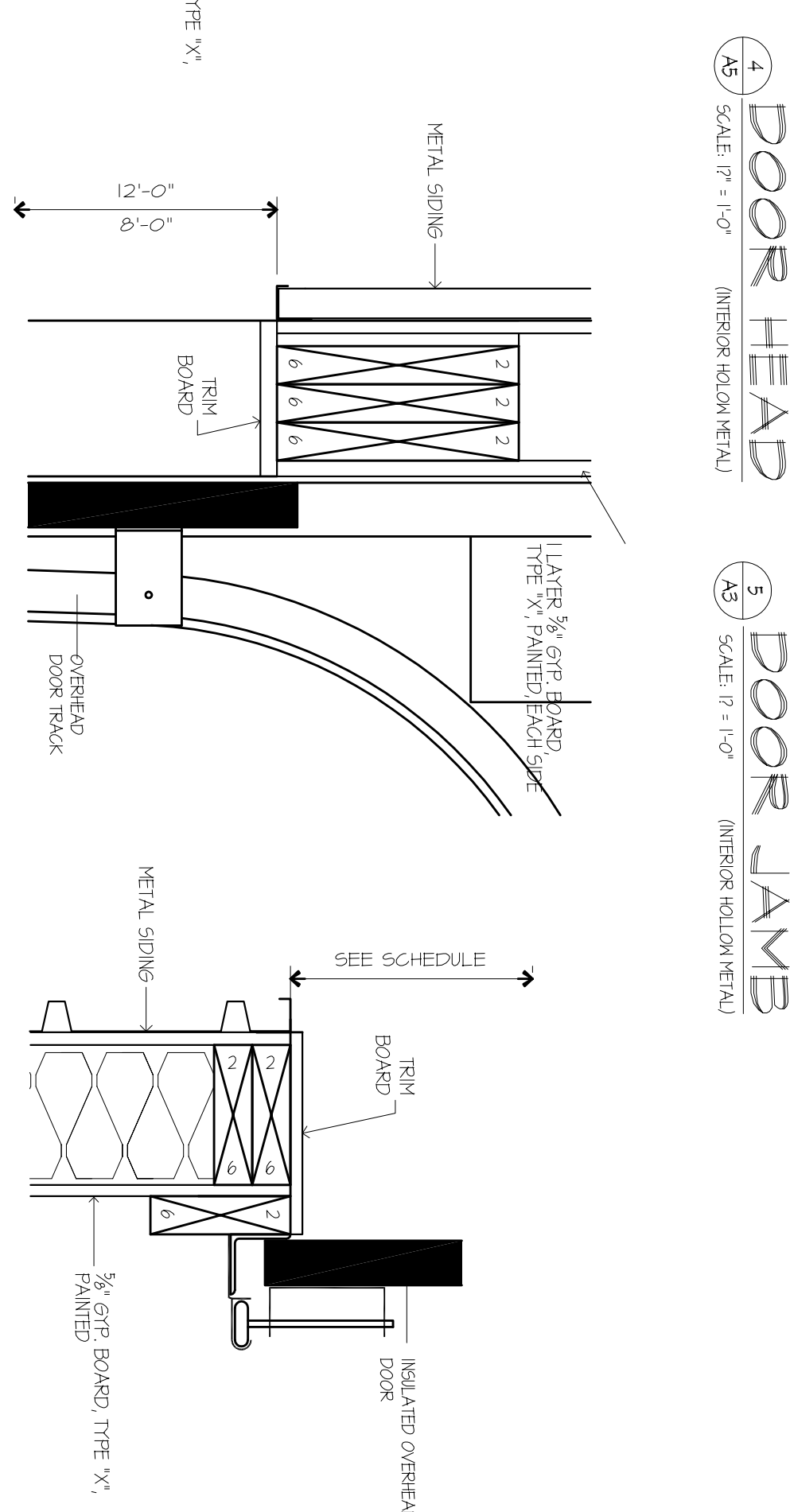
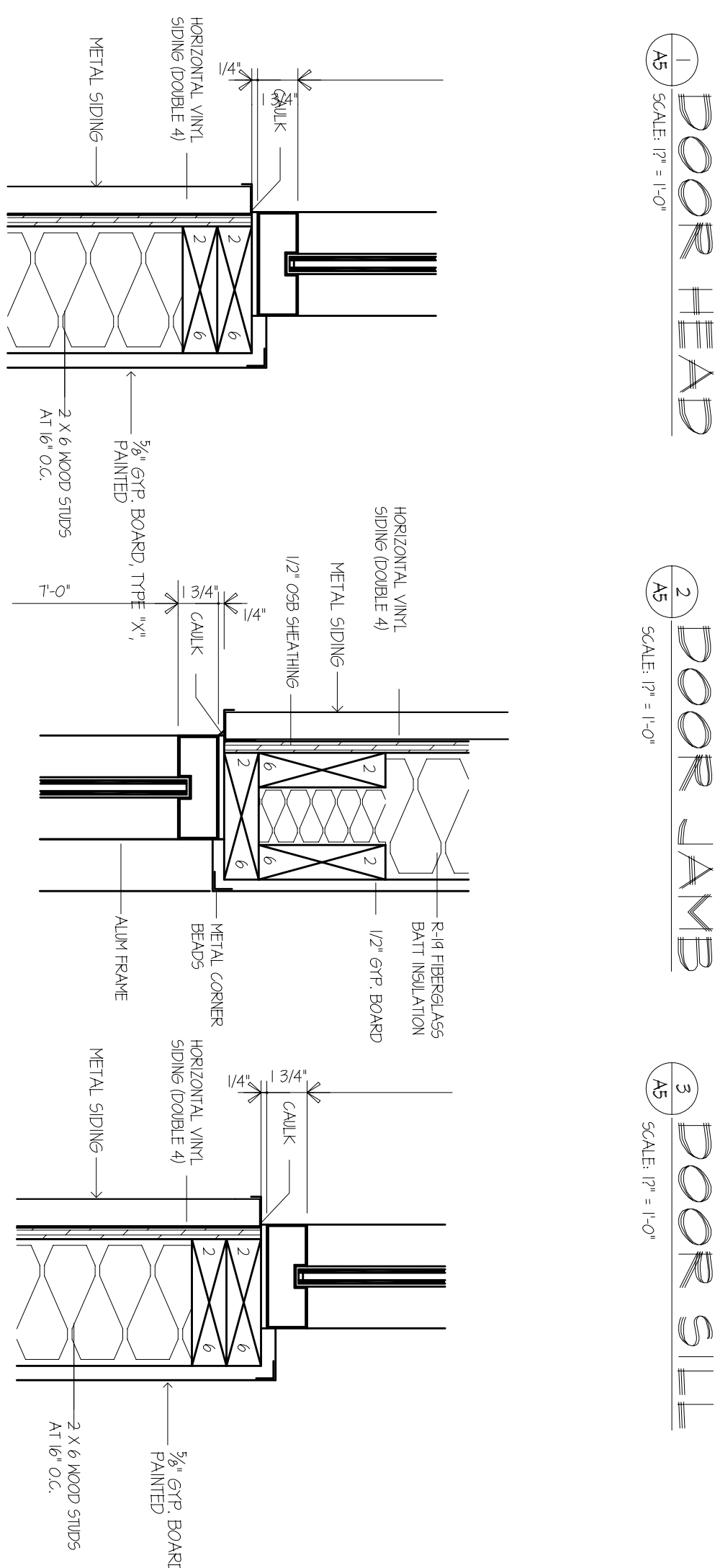
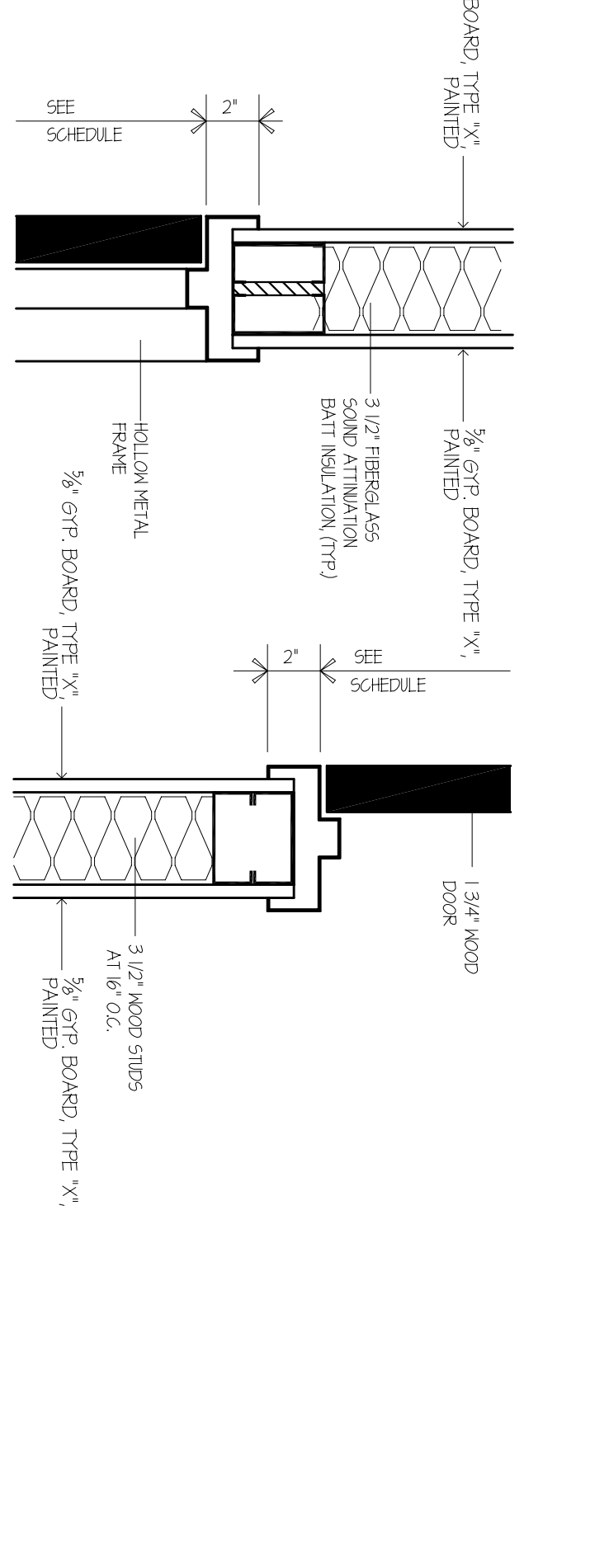
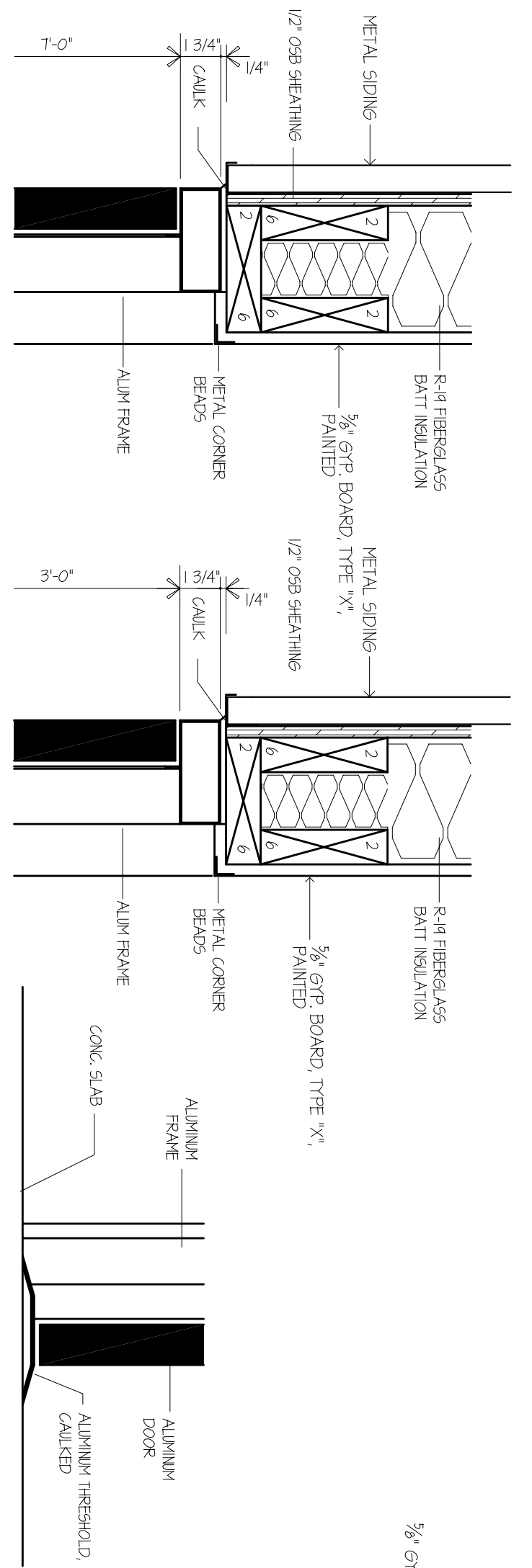
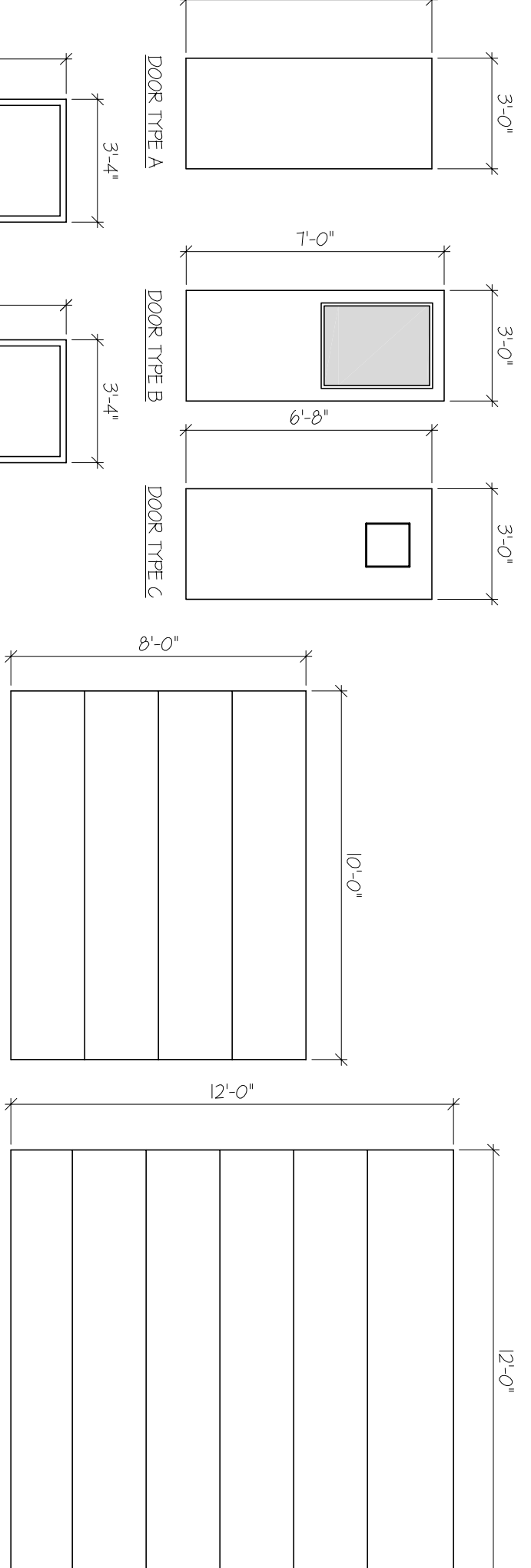


ROOM FINISH SCHEDULE											
NO.	NAME	FLOOR	WALLS			CEILING			REMARKS		
			BASE	NORTH	SOUTH	WEST	EAST	MAT.		FIN.	HGT.
01	GARAGE	4" VINYL	PAINT	PAINT	PAINT	PAINT	PAINT	PAINT	PAINT	-	
02	OFFICE	4" VINYL	PAINT	PAINT	PAINT	PAINT	PAINT	PAINT	PAINT	PAINT	
03	MECH.	4" VINYL	PAINT	PAINT	PAINT	PAINT	PAINT	PAINT	PAINT	PAINT	
04	TILE	4" VINYL	PAINT	PAINT	PAINT	PAINT	PAINT	PAINT	PAINT	PAINT	
05	TOILET	4" VINYL	PAINT	PAINT	PAINT	PAINT	PAINT	PAINT	PAINT	PAINT	
06	BREAK AREA	4" VINYL	PAINT	PAINT	PAINT	PAINT	PAINT	PAINT	PAINT	PAINT	
07	STAIR	4" VINYL	PAINT	PAINT	PAINT	PAINT	PAINT	PAINT	PAINT	PAINT	
08	UPPER LEVEL	4" VINYL	PAINT	PAINT	PAINT	PAINT	PAINT	PAINT	PAINT	PAINT	

NO.	SIZE	DOOR			FRAME			HEAD	JAMB	SILL	LABEL	HDM	REMARKS
		MAT.	TYPE	GLAZ.	MAT.	TYPE	GLAZ.						
01	12'-0" X 12'-0" OH.	ALUM.	E	-	MD	-	-	9/AS	10/AS	10/AS	-	-	INSULATED DOOR CLOSER
02	12'-0" X 12'-0" OH.	ALUM.	E	-	MD	-	-	9/AS	10/AS	10/AS	-	-	INSULATED DOOR CLOSER
03	12'-0" X 12'-0" OH.	ALUM.	E	-	MD	-	-	9/AS	10/AS	10/AS	-	-	INSULATED DOOR CLOSER
04	10'-0" X 8'-0" OH.	ALUM.	E	-	MD	-	-	9/AS	10/AS	10/AS	-	-	INSULATED DOOR CLOSER
05	6'-8" X 3'-0" X 1/4"	HM	C	1/4" T	HM	A	-	4/AS	5/AS	5/AS	-	-	LOOK AND CLOSER
06	6'-8" X 3'-0" X 1/4"	HM	B	-	HM	B	-	4/AS	5/AS	5/AS	-	-	LOOK AND CLOSER
07	11'-0" X 3'-0" X 1/4"	HM	C	1/4" T	HM	A	-	4/AS	5/AS	5/AS	-	-	LOOK AND CLOSER
08	6'-8" X 3'-0" X 1/4"	HM	A	-	HM	A	-	4/AS	5/AS	5/AS	-	-	LOOK AND CLOSER
09	6'-8" X 3'-0" X 1/4"	HM	A	-	HM	A	-	4/AS	5/AS	5/AS	-	-	LOOK AND CLOSER
10	6'-8" X 3'-0" X 1/4"	HM	B	1/4" T	HM	A	-	4/AS	5/AS	5/AS	-	-	LOOK AND CLOSER
11	6'-8" X 3'-0" X 1/4"	HM	B	-	HM	B	-	4/AS	5/AS	5/AS	-	-	LOOK AND CLOSER
12	6'-8" X 3'-0" X 1/4"	HM	C	1/4" T	HM	A	-	4/AS	5/AS	5/AS	-	-	LOOK AND CLOSER
13	6'-8" X 3'-0" X 1/4"	HM	A	-	HM	A	-	4/AS	5/AS	5/AS	-	-	CLOSER



RESTROOM ELEVATION
SCALE: 1/2" = 1'-0"

RESTROOM ELEVATION
SCALE: 1/2" = 1'-0"

NOTES:
1. TOILET OVERHEAD SHALL BE 7" - 8" IN FRONT OF THE WATER CLOSET FOR U.S.A. 2003 (K14.101)
2. ALL EXPOSED PIPES, WIRE, LAMINATES AND SINGS WILL BE INSULATED AND COVERED IN CONFORMANCE WITH U.S.A. 2003 (K14.101)
3. ALL EXPOSED WIRE, LAMINATES AND SINGS WILL BE COVERED IN CONFORMANCE WITH U.S.A. 2003 (K14.101)
4. ALL EXPOSED WIRE, LAMINATES AND SINGS WILL BE COVERED IN CONFORMANCE WITH U.S.A. 2003 (K14.101)