

NEW BUILDING FOR:
GULL LAKE SEWER AND WATER AUTHORITY
7722 N. 37TH STREET
RICHLAND, MICHIGAN 49083

LOWER LEVEL ELECTRICAL PLAN

HOWARD L. OVERBERG
ARCHITECT, P.C.

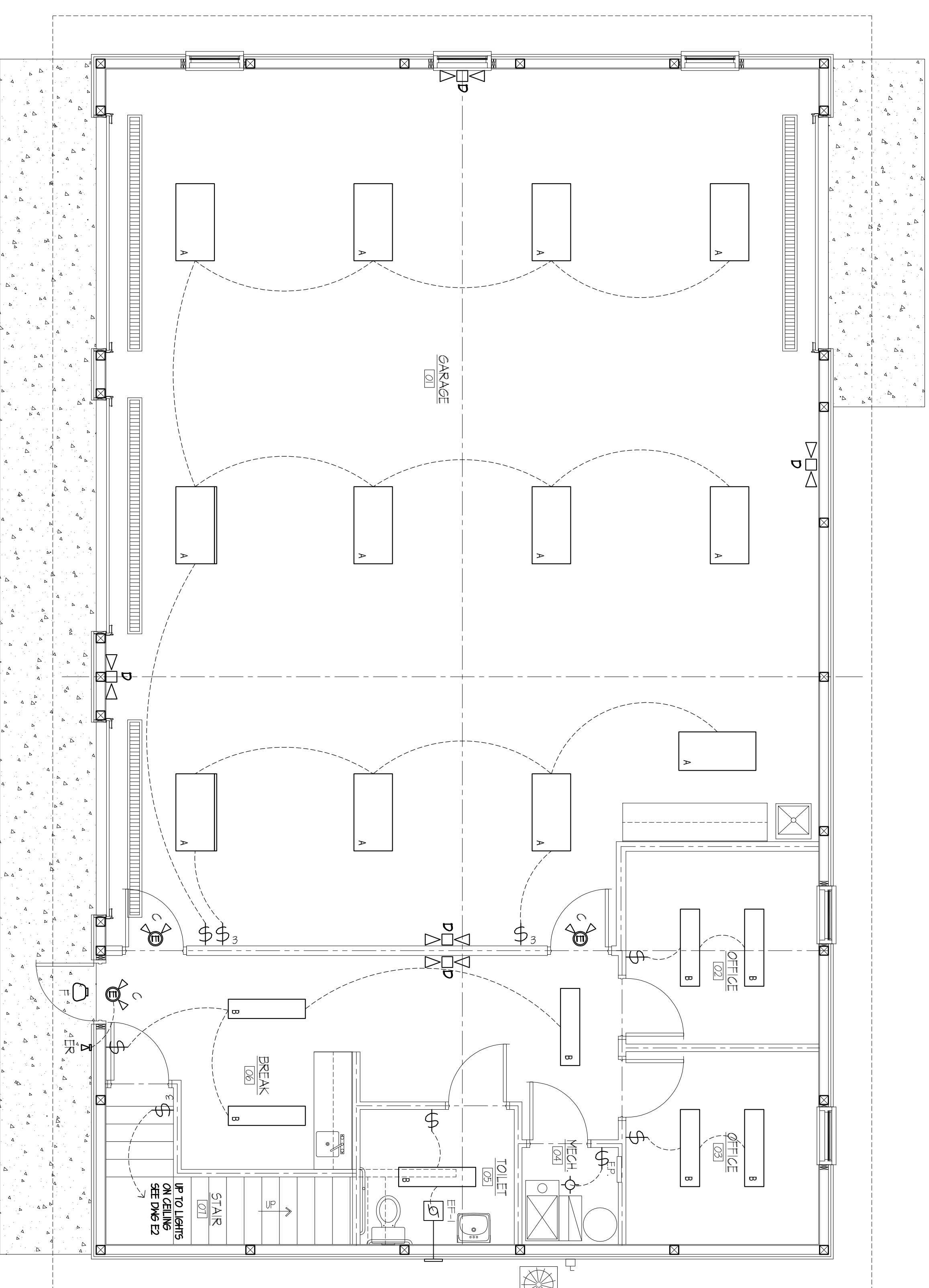
198 EAST CENTRE
PORTAGE, MICHIGAN
PHONE (269) 323-2422
FAX (269) 323-2440



PROJECT NO.
0000

DATE
01/03/17

REVISION



FIXTURE SCHEDULE

- A LITONIA 2X4 LED ACRYLIC LRB6 120V SURFACE MOUNT
- B LITONIA 1X4 LED ACRYLIC LRB6 120V SURFACE MOUNT
- C LITONIA PERSBRYC EXIT COMBINATION CAT# L14H-LED-R40
- D LITONIA PERSBRYC EGRESS FIXTURE CAT# E14Q-LED
- E LITONIA REVOTE EGRESS/HEAD IP CAT# E14H-H0606
- F 151 NUMBERS RIA CAT# E-OUTRGE HIGH LED LAMP 120V CAT# E0201-14H-LED-CO-LED-9W-5000K-14 (COLOR BY ARCHITECT)
- S 3-WAY SWITCH
- S SINGLE POLE SWITCH
- F=1 EAWST FAN 50 CM

NORTH
LOWER LEVEL LIGHTING PLAN
SCALE 1/4" = 1'-0"

Ø DIRECT RECEPTACLE ON DEDICATED CIRCUIT

▷ LOCATION OF FURN SINGLE GANG TELEPHONE
OUTLET SHALL BE INSTALLED IN THE CENTER
OF THE GANG AND SHALL BE TERMINATED TO
MATCH THE OTHER GANGS. TERMINATE CONDUITS
WITH PLASTIC BUSHINGS. INSTALL COVER PLATES
AT ALL LOCATIONS. (17Y)

SHEET
BI