

NEW BUILDING FOR:  
**GULL LAKE SEWER AND WATER AUTHORITY**  
 7722 N. 37TH STREET  
 RICHLAND, MICHIGAN 49083

# UPPER LEVEL ELECTRICAL PLAN

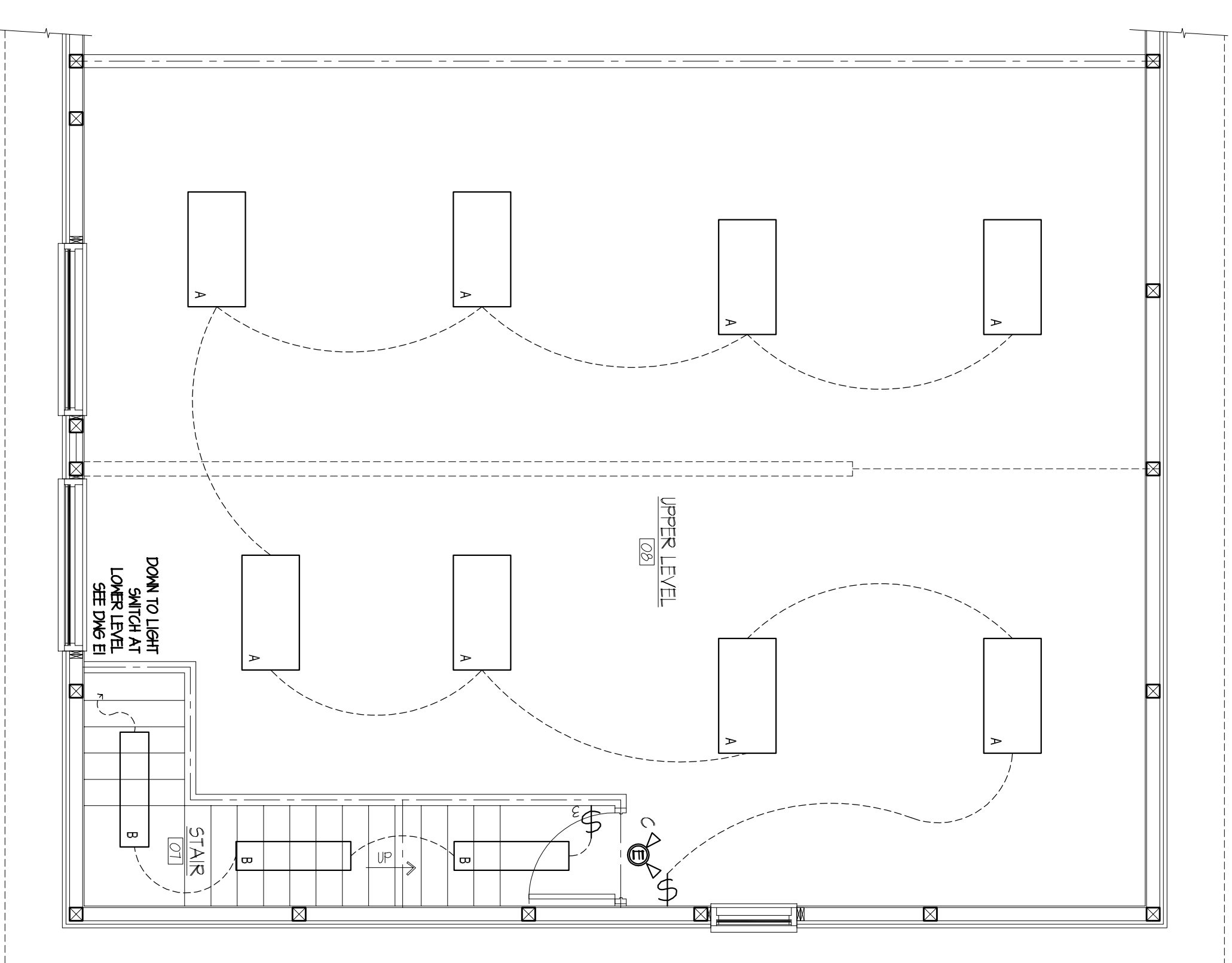
HOWARD L. OVERBERG  
 ARCHITECT, P.C.

198 EAST CENTRE  
 PORTAGE, MICHIGAN  
 PHONE (269) 323-2422  
 FAX (269) 323-2440

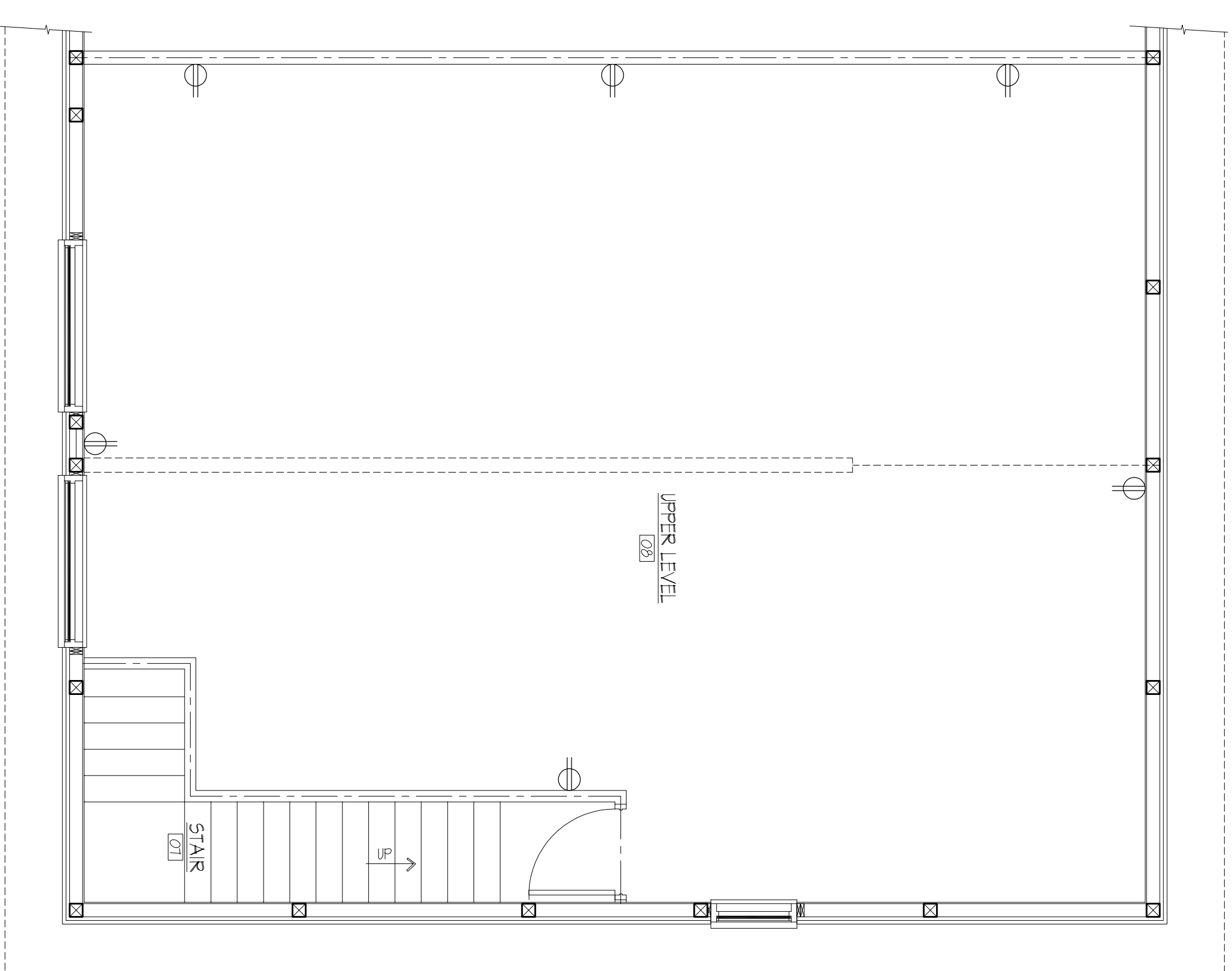
PROJECT NO.  
 0000

DATE  
 01/03/17

REVISION



UPPER LEVEL LIGHTING PLAN  
 SCALE 1/4" = 1'-0"



UPPER LEVEL ELECTRICAL PLAN  
 SCALE 1/4" = 1'-0"

### FIXTURE SCHEDULE

A LINONIA 2X4 LED, AERTRIC LINE, 120V SURFACE MOUNT

B LINONIA 1X4 LED, AERTRIC LINE, 120V SURFACE MOUNT

C LINONIA EMERGENCY EXIT COMBINATION CAT# LKH-LED-R40

D LINONIA EMERGENCY EGRESS FIXTURE CAT# EHX-LED

E LINONIA REBOTE EMERGENCY HEAD #P CAT# EJA-HK-HX06

F LIGHTING FIXTURES: 8'X4' 5'X7' E, OTHER: 8'X4' LED LAMP, 120V CAT# B9202, 5'X7' LED-30" CAT# L594R, OTHER: (SEE COLOR BY ARCHITECT)

S 3-WAY SWITCH

S SINGLE POLE SWITCH

EF-1 EMERST FAN 50 CM

Ø DIRECT RECEPTACLE ON DEDICATED CIRCUIT

▷ LOCATION OF FLUSH SINGLE GANG TELEPHONE RECEPTACLE AND SINGLE TERMINAL CONDUITS WITH PLASTIC BUSHINGS, 1/2" ALL COVER PLATES AT ALL LOCATIONS. (M79)